

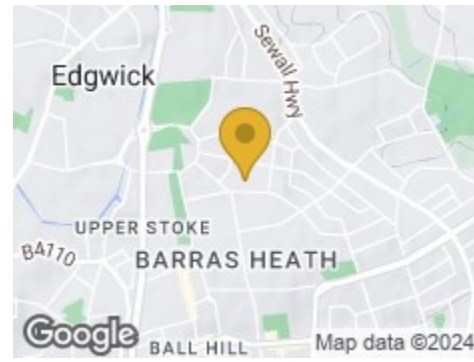
Road Map



Hybrid Map



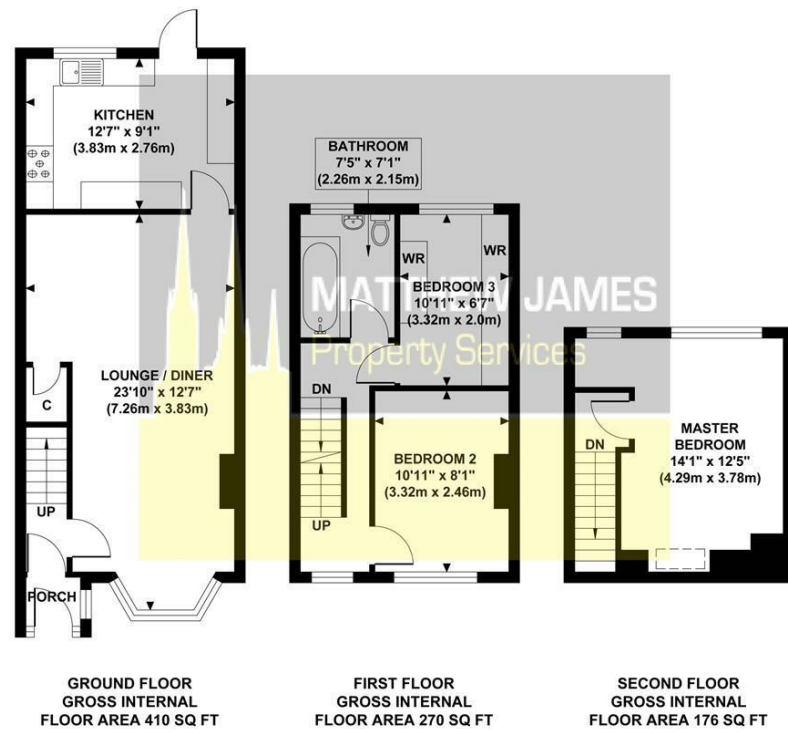
Terrain Map



**MATTHEW JAMES**  
Property Services

Floor Plan

**8 STUBBS GROVE**  
Approximate Gross Internal Area 856 sq ft / 79.60 sq m



Although every attempt has been made to ensure accuracy, all measurements are approximate and no responsibility is taken for any error, omission, or mid-statement. This floor plan is for illustrative purposes only and not to scale. Measured in accordance to RICS standards.



**8 Stubbs Grove**

Wyken, Coventry CV2 3GD

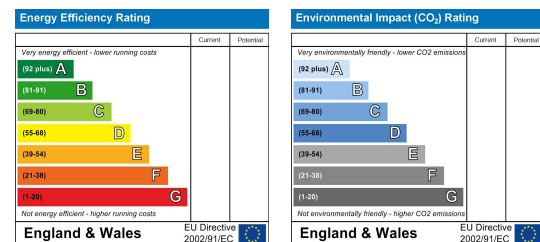
Best Offers Over £195,000



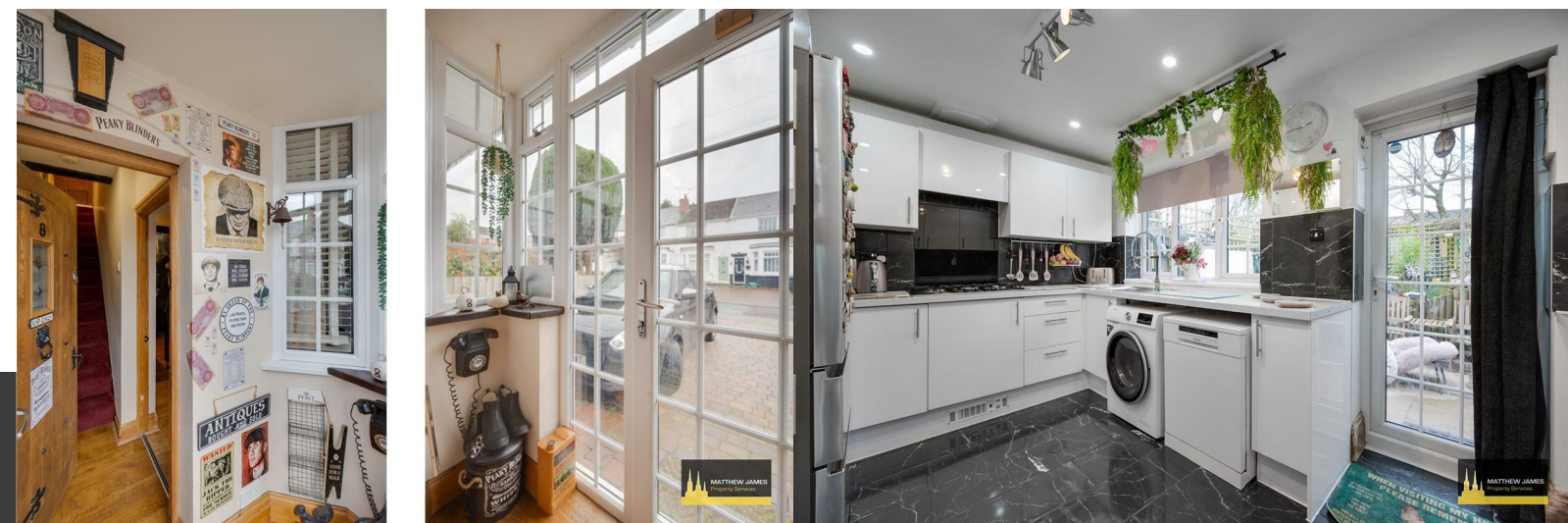
Viewing

Please contact us on 02477 170170 if you wish to arrange a viewing appointment for this property or require further information.

Energy Efficiency Graph



These particulars, whilst believed to be accurate are set out as a general outline only for guidance and do not constitute any part of an offer or contract. Intending purchasers should not rely on them as statements of representation of fact, but must satisfy themselves by inspection or otherwise as to their accuracy. No person in this firm's employment has the authority to make or give any representation or warranty in respect of the property.



CONTACT INFORMATION

24a Warwick Row, Coventry CV1 1EY

02477 170170

info@matthewjames.uk.com

www.matthewjames.uk.com

Facebook

Twitter

# 8 Stubbs Grove

Wyken, Coventry CV2 3GD

Best Offers Over £195,000



Driveway

Entrance Porch

Lounge / Diner  
23'10 x 10'10

Fitted Kitchen  
12'7 x 9'1

First Floor Landing

Bedroom Two  
10'11 x 8'1

Bedroom Three  
10'11 x 6'7

Family Bathroom  
7'5 x 7'1

Bedroom One  
14'1 x 12'5

Rear Garden

Garage

